

How to get involved

We're already working with 1,600 secondary schools and colleges. Join the network for tailored support which will prepare your young people for the fast-changing world of work and improve their chances of getting jobs.

Joining is completely free and it's easy to get your school or college involved.



Careers and enterprise education is not only important in preparing young people for the world of work. It is also an essential and central part of raising standards. The Careers & Enterprise Company provides a national platform to make this happen, bringing schools and businesses together to provide students with their entitlement to skills acquisition, engagement with employers and inspiration to engage with their studies.

Nick Bowen,
Principal, Horizon Community College,
Barnsley



Our people want to support their local schools and as an employer we want to reach out and offer schools career advice. The Careers & Enterprise Company with the Enterprise Adviser Network enables Capgemini and our employees to do this. The Enterprise Adviser role model has the potential to operate in every UK state school delivering a complete change in helping all school children reach their potential.

Michelle Perkins,
Schools Director, Capgemini



Our ambition for the Enterprise Adviser Network

- **More is more:** We will ensure every young person in England gets at least 4 employer and workplace encounters.
- **Start younger:** We will make sure careers education starts in year 7.
- **Follow the impact:** We will incorporate evidence of what works to guide careers planning in schools and colleges.
- **Make it last:** We will embed an ethos that celebrates careers and enterprise opportunities and places them at the heart of schools and colleges and their curriculums.

Find out more

It's easy to join the Enterprise Adviser Network and get your school or college involved.

www.careersandenterprise.co.uk

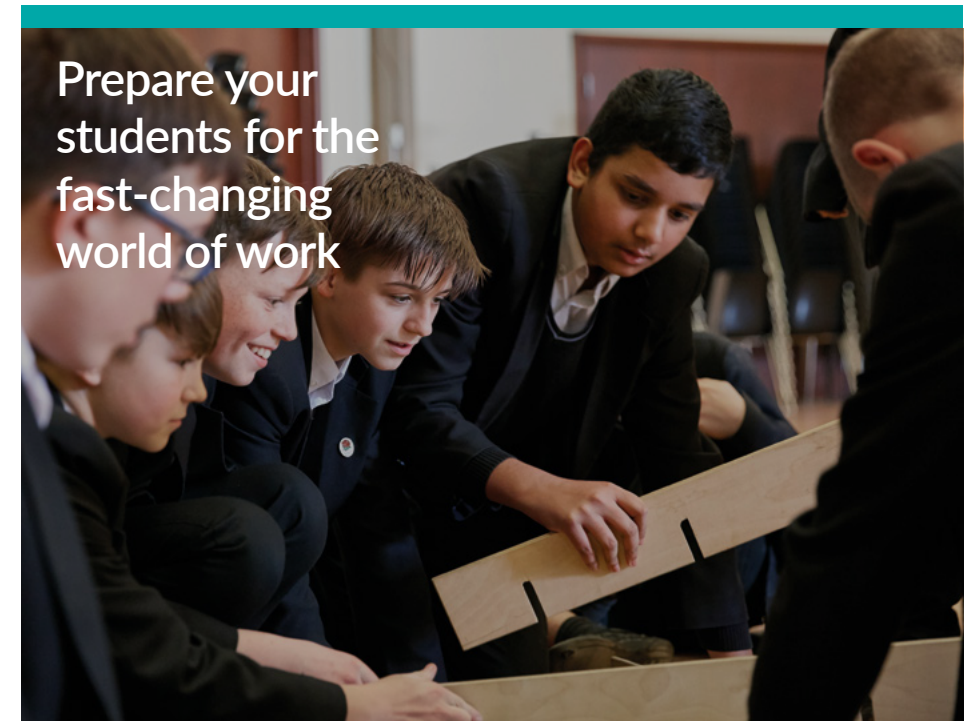
✉ education@careersandenterprise.co.uk

🐦 [@CareerEnt](https://twitter.com/CareerEnt)

JOIN OUR ENTERPRISE ADVISER NETWORK

THE CAREERS & ENTERPRISE COMPANY

Schools and colleges



Prepare your students for the fast-changing world of work

Join our Enterprise Adviser Network

- Get free, tailored support from a trained local Enterprise Coordinator.
- Be supported by a free, dedicated senior business volunteer (an Enterprise Adviser) who will help inform your careers strategy and planning.
- Get connected to a community of careers programme providers who deliver well-evidenced programmes.
- Stay up-to-date with skills needs and career opportunities at a local and national level.
- Get support to provide your students with meaningful work encounters with local and national employers.

Connecting young people to the workplace

Rapid technological development is bringing huge change to the labour market, and at the same time the education system is shifting. This can leave many young people overwhelmed by the choices in front of them.

Young people need more information, more experiences of the world of work

and more support to help them navigate their next steps.

We want to support schools and colleges so they can ensure every young person, no matter their background, has the opportunity to explore their options and succeed in the world of work.

We know there is no shortage of goodwill and lots of great work is happening to inspire and support young people. And we understand what can hold schools and colleges back: lack of time and resources, finding ways to connect with relevant employers and the challenge of identifying the most effective careers programme providers.

Our vision is to be the one place schools, colleges, employers and careers programme providers come to if they want to invest effectively and efficiently in preparing young people for the future.

Why joining the network is right for your school or college

- Help your young people receive 4 or more encounters with the world of work.
- Be supported by a free, trained local Enterprise Coordinator who works with a group of local schools and colleges to develop a tailored careers and enterprise plan and connect you with employers and effective careers programme providers.
- Be supported by a free and dedicated senior business volunteer, an Enterprise Adviser, who will help you develop a strategic and sustainable plan and create connections to the local business community.
- Receive a range of practical tools and information on what works best in careers and enterprise provision, which can be tailored to meet your school or college's specific needs.
- Connect to a community of careers programme providers who deliver well-evidenced programmes and activities that support increased and impactful encounters with the world of work.
- Connect to national and local employers who can deliver activities and programmes that support your school or college's careers and enterprise plan.

86%

BUT

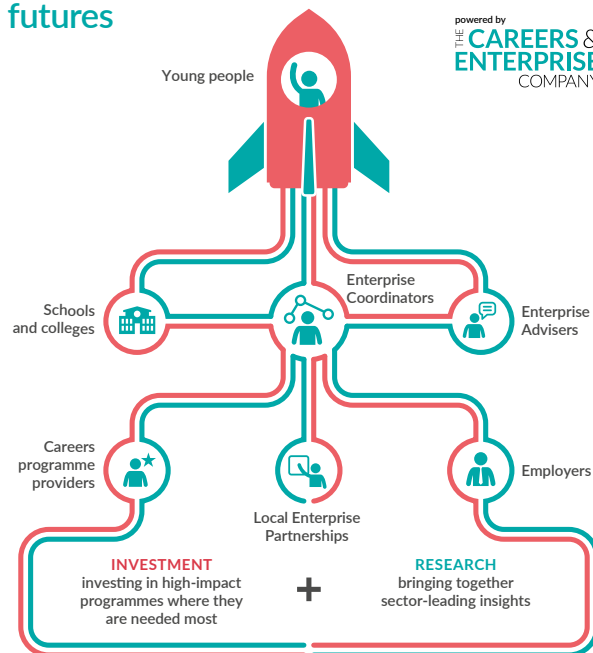
40%

The evidence clearly shows that a young person who has 4 or more encounters with an employer is 86% less likely to be unemployed or not in education or training, and can earn up to 18% more during their career.

At the moment only in 40% of schools are young people receiving this kind of encounter, and unemployment among young people is 3 times higher than the national average.

Fuelling young people's futures

- **Local Enterprise Partnerships** oversee the network locally
- **Employers** help young people get 4 or more encounters with the world of work
- **Careers programme providers** deliver high-impact careers and enterprise programmes
- **Enterprise Coordinators** connect schools and colleges with employers and providers
- **Enterprise Advisers** (senior business volunteers) work in partnership with schools and colleges to develop a careers plan and connections
- **Schools and colleges** work with Enterprise Coordinators and Enterprise Advisers to get their young people the careers and enterprise support they need
- **Young people** are prepared and inspired for the future



How the network works

- Some careers initiatives don't deliver what they promise. But we believe our approach is different. We really want to make it easy for schools and colleges to be connected to employers and the best providers of careers and enterprise activities and programmes.
- Schools and colleges are connected to a trained Enterprise Coordinator. Our Enterprise Coordinators are there to ensure your school or college is fully supported in its activities and to connect you to employers and the most effective careers programme providers.
- Your school or college will also be supported by a dedicated senior business volunteer, an Enterprise Adviser, to work with you to develop and implement a sustainable careers and enterprise plan.